

Classic Steel Series Straight and Angle Die Grinders

MP-3040-C 1/4" Angle Die Grinder

Industrial grinder excellent for die contouring, deburring and blending in hard to reach areas.

MP-3040E-C 1/4" Extended Angle Die Grinder

Extended angle grinder used in die shops, shipyards, foundries and fabrication shops for hard to reach places. Rugged 1HP motor. **Model MP-3040AE-C with aluminum motor housing available**

MP-3040 4" Angle Grinder with Guard

Rugged angle grinder, ideal for industrial applications including welding shops, foundries, fabrication plants, steel mills and shipyards.

MP-3040-E4 4" Extended Angle Grinder with Guard

Extended reach angle grinder designed for cleaning, deburring, smoothing and blending. Ideal for foundries, shipyards and fabrication shops. **Features adjustable side exhaust. Model MP-3040A-E4 with aluminum motor housing available**



**MICHIGAN
PNEUMATIC TOOL**

Model	Collet Size	Wheel Size	Spindle Thread	Free Speed	Max HP	Height	Length	Weight	Air Inlet Thread	Rec'd Hose Size	Avg. Air Consumption
MP-3040-C	1/4"	—	—	13,500 rpm	1 hp	2-1/2"	8"	2.75 lbs	1/4"	3/8"	10 cfm
MP-3040E-C	1/4"	—	—	13,500 rpm	1 hp	2-1/2"	10"	3.20 lbs	1/4"	3/8"	10 cfm
MP-3040	—	4"	3/8"-24	13,500 rpm	1 hp	2-1/2"	8"	3.125 lbs	1/4"	3/8"	26 cfm
MP-3040-E4	—	4"	3/8"-24	13,500 rpm	1 hp	2-1/2"	10"	3.5 lbs	1/4"	3/8"	26 cfm

MP-9113-14 1/4" Die Grinder Front Exhaust

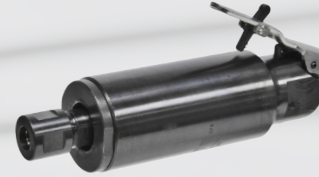
Features a steel housing. Uses mounted stones, wire brushes or carbide burrs. Ideal for use in foundries, welding and fabrications shops, shipyards, rail car repair and many other industrial facilities.

MP-9113A-38 3/8" Die Grinder Front Exhaust

Features an aluminum housing. Uses mounted stones, wire brushes or carbide burrs. Ideal for use in foundries, welding and fabrications shops, shipyards, rail car repair and many other industrial facilities.

MP-9113E-14 Extended 1/4" Die Grinder with Side Exhaust

Features a steel housing. Uses mounted stones, wire brushes or carbide burrs. Ideal for use in foundries, welding and fabrications shops, shipyards, rail car repair and many other industrial facilities.



MP-9113-14



MP-9113A-38



MP-9113E-14

Model	Collet Size	Free Speed	Max HP	Length	Weight	Air Inlet Thread	Rec'd Hose Size	Avg. Air Consumption
MP-9113-14	1/4"	25,000 rpm	1 hp	6-1/4"	2.25 lbs	1/4"	3/8"	11.9 cfm
MP-9113A-38	3/8"	25,000 rpm	1 hp	6-1/4"	1.50 lbs	1/4"	3/8"	11.9 cfm
MP-9113E-14	1/4"	25,000 rpm	1 hp	11-1/16"	3.30 lbs	1/4"	3/8"	11.9 cfm



6850 Middlebelt Rd. • Romulus, MI 48174 • **1-800-521-8104** • Ph: (313) 933-5890 • Fax: (313) 933-0440
www.michiganpneumatic.com • e-mail: mpt@michiganpneumatic.com